



403.381.7504

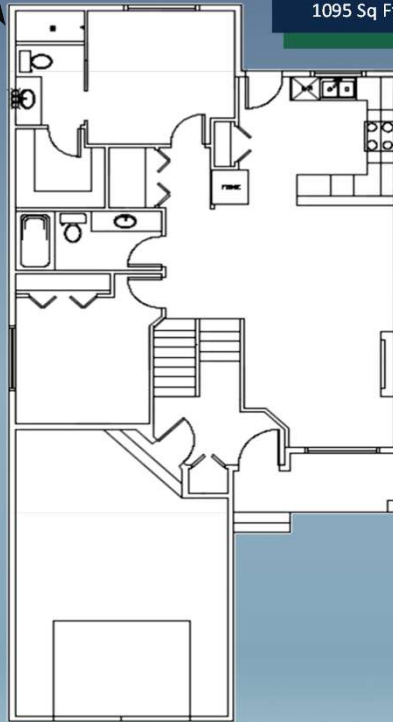
\$449,900

# 315 Skeena Cres W

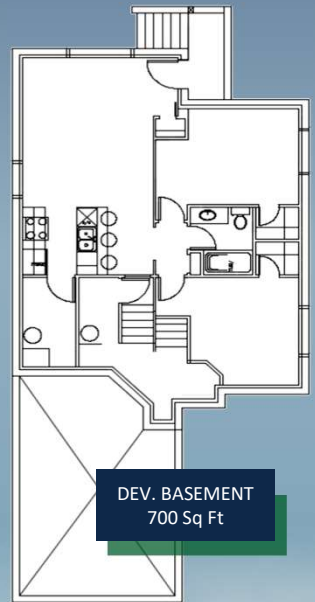
### Features:

- Beautifully Designed 1095 Sq Ft Suited Home
- Vaulted Ceilings, 4 Bedrooms & 3 Full Baths
- Custom Gourmet Kitchen w/ S/S Appliances
- Quartz Countertops & Wide Plank Vinyl Floors Throughout
- Open Concept Dining adjacent to Kitchen
- Large Great Room w/ Modern Electric Fireplace
- Widegrain Vinyl Plank & Marble Style Vinyl Floors
- Iron Spindle Railing w/ open to below Foyer
- Master Bedroom w/ Ensuite & Walk Through Closet
- Gas Line To Deck & Rough In Garage Heater
- Hunterdouglas Blinds & Upgraded Lighting
- Beautiful Main Floor Deck
- 700 Sq Ft Developed Suited Basement
- Basement Includes Separate Entrance, Parking, Kitchen, Laundry Room, 2 Bedrooms, Full Bath, Storage & Mechanical Room w/ Separate Furnace & Hot Water Tank
- Sprinklers & Front/Back Landscaping/Fencing
- Lot Features Paved Back Lane & 2 Car Parking Pad

MAIN FLOOR  
1095 Sq Ft



DEV. BASEMENT  
700 Sq Ft



716 1<sup>ST</sup> Ave S – Lethbridge, AB



716 1<sup>ST</sup> Ave S – Lethbridge, AB

# The HIGHFIELD



# The HIGHFIELD



**RIVERPARK**  
HOMES INC.